

HMP Kickoff
June 22, 2011

Component A
CHIP + DPHIP
Strategic Alignment
for
Efficiency & Effectiveness

OLPH/Maine CDC



MAPP- Phase 6 - Principles

- Strategic Plan + Action Plan
= Community Health Improvement Plan
- The Strategic Plan by itself is not a CHIP
- May be a 10 year vision but a 3-5 year plan

- The action is at the local community level
- Chunk the work down so it's manageable

Office of Local Public Health/Maine CDC



MAPP- Phase 6 - Immediate Next Steps

1. build, reboot, or enhance local MAPP Cmte.
 2. review written Strategic Plan/strategies
 3. refresh & prioritize goals for feasibility/results
 4. develop written objectives, select metrics
- Plan must identify who is responsible for what
 - Communication Plan/Interim Reports
 - Evaluation Plan
 - Business Plan

Office of Local Public Health/Maine CDC



MAPP evaluations: *Lessons Learned*

- Metrics look at “contribution to change”
- Strengthened internal capacity of MAPP cmte
- Enhance capacity to work w/community
- Create sustainable partnership for MAPP
- Programs, services, activities address the broader determinants of health
- Policy focus

NACCHO webinar MAPP Evaluation www.naccho.org

Office of Local Public Health/Maine CDC

HMP contract commitments are set

- Comp A: DPHIP** Internal Priority
- Comp A: CHIP [MAPP]** Internal Priority
- Comp B: CompB Workplan** Internal Priority

Office of Local Public Health/Maine CDC

But environment is fluid & dynamic

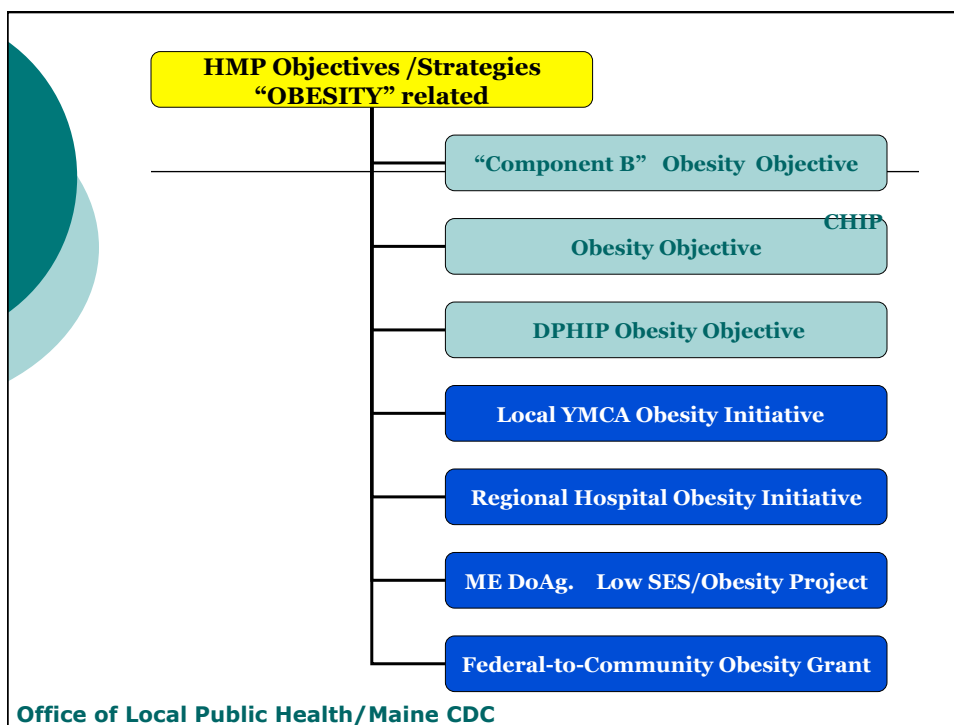
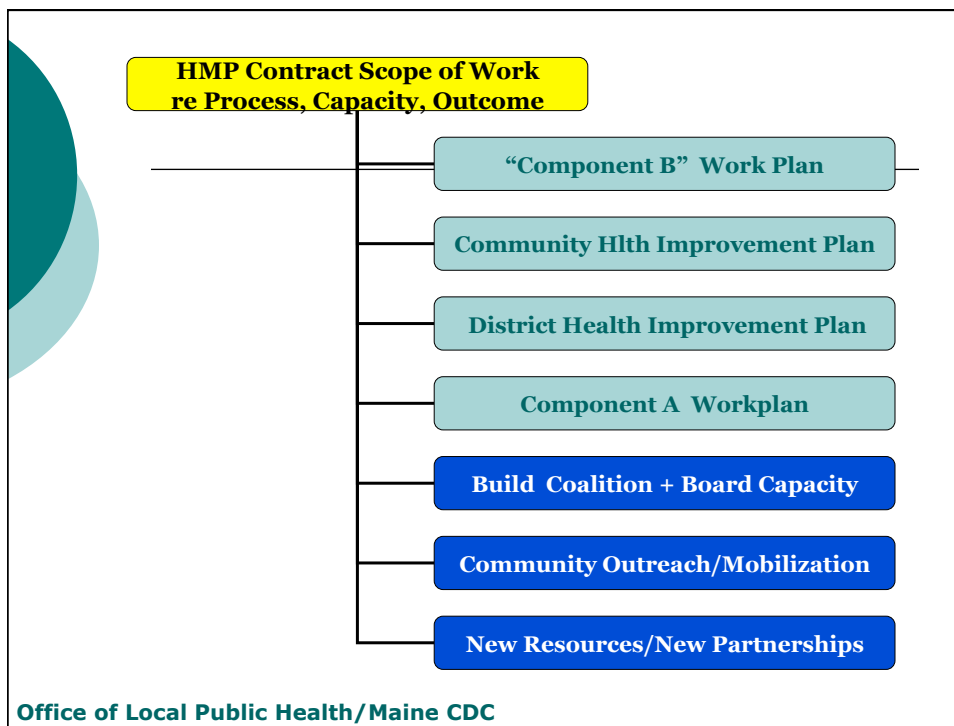
at community level:

- Other* Local Agency Initiative External Priority
- Federal to Community Pgm. External Priority

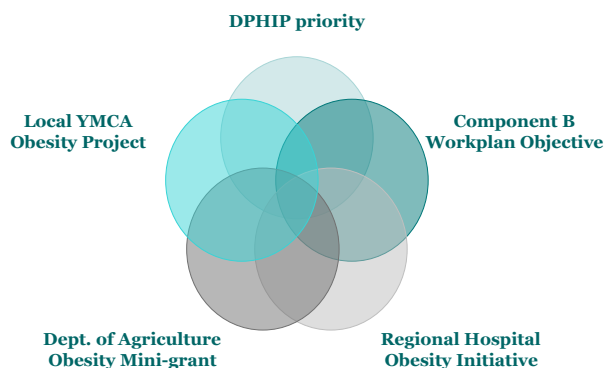
from state level:

- *Non-MCDC* State agency's pgm. External Priority
- [State Health Plan] "External" Priority

Office of Local Public Health/Maine CDC



What can this look like? “obesity”



Office of Local Public Health/Maine CDC

Designed for success:

- Same *goal or objective* can be cited multiple times
- *Strategies & activities* for each project should differ
- HMP activities of funded HMP staff reference source of funding and HMP tag line or logo
- Local HMP impacts/activities resulting from DPHIP cmtc planning reference the District as well as HMP

Office of Local Public Health/Maine CDC

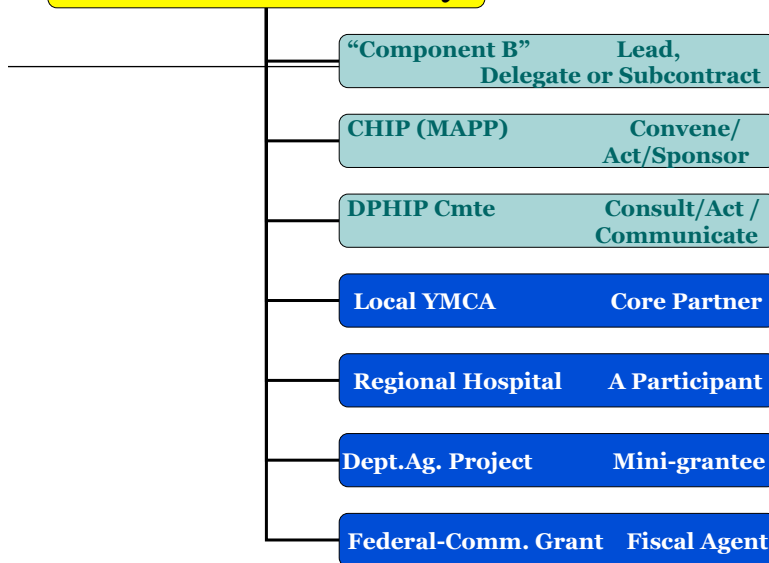
Clarify what we really mean:

Same? Slightly different? Very Different?

- What** impact? (written objectives)
- How** we will know what happened? (metrics/data?)
- Who** is included in the focus? (priority pops?)
- Where** will activities occur? (setting?)
- What type** of activities? (interventions, e.g policy)
- Which** community levels? (ecological/ie social networks)

Office of Local Public Health/Maine CDC

HMP Roles re “Obesity”



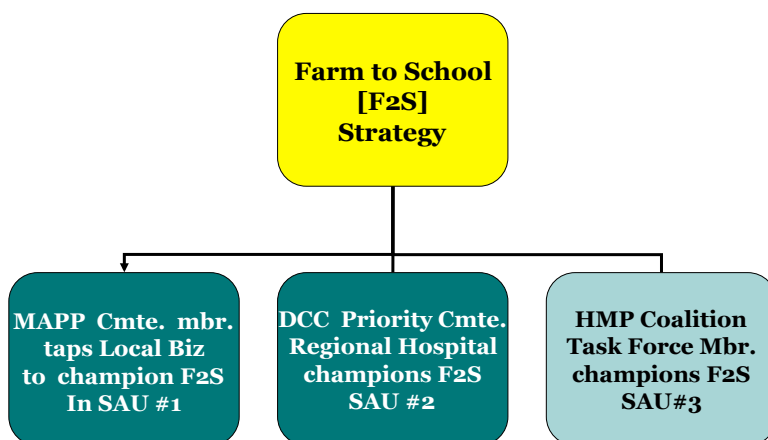
Office of Local Public Health/Maine CDC

Align CHIP/DPHIP/B “internal” priorities

- if the projects differ, how do they complement or link to each other?
- What is the degree of HMP effort needed so that *HMP or the partner or the District* gets results?
- Will this level of HMP effort contributed to “external” priorities help us reach our own deliverables, priorities and mission?

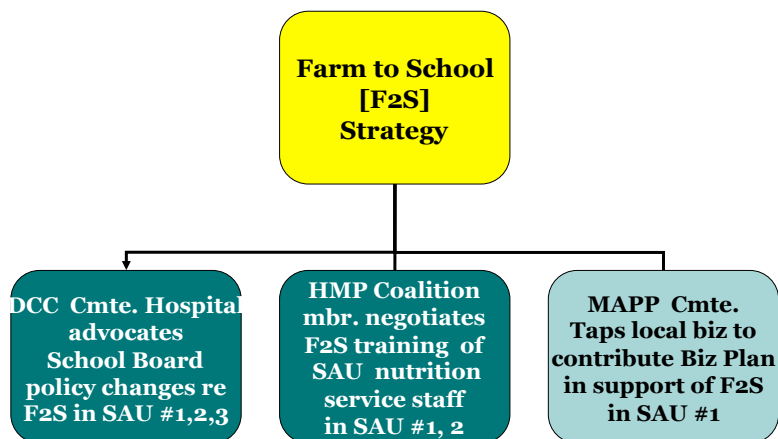
Office of Local Public Health/Maine CDC

Aligned plans can amplify area coverage



Office of Local Public Health/Maine CDC

Alignment can target different ecological levels with different actors



Office of Local Public Health/Maine CDC

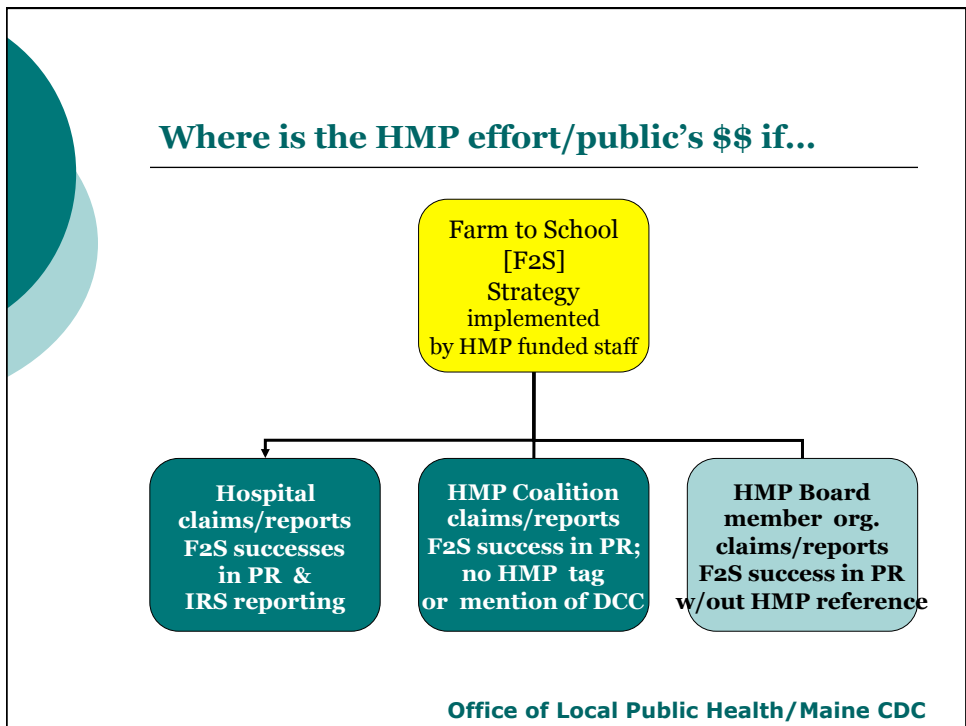
Other strategic alignment activities

Convene non-traditional community sectors
to identify unlike incentives and shared interests

Use time-limited partnerships (1 pager MOU)
across LSAs for the same *internal objectives*
e.g. “Somali immigrants and obesity.”

Document expectations & plans for resource sharing;
including how authorship for results will be shared

Office of Local Public Health/Maine CDC



“obesity” in the near future

- National Prevention Strategy = more sectors will get involved
- OLPH encourages transparency to understand HMP workload
- OLPH encourages alignment to avoid HMP overload
- OLPH supports HMP success at LSA and District levels

“Less activity”; more strategy

Fewer “priorities”; more focus

Flexibility not fragmentation

Empower as well as serve

Office of Local Public Health/Maine CDC



Definition of Public Health Quality

“...The degree to which policies, programs, services and research for the population **increase** desired health outcomes and conditions in which the population can be healthy.”

[emphasis: OLPH]

Priority Areas for Improvement of Quality in Public Health (US DHHS 2010)

Office of Local Public Health/Maine CDC